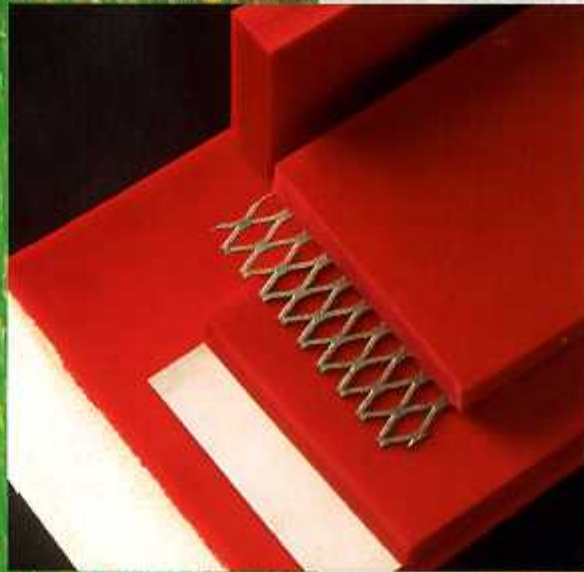




KRYPTANE®

**You've tried the rest
now buy the best**



**abrasion resistant
polyurethane linings
and products
for milling
and feedstuff industry**



**Anaconda Belting Company
2 Ashwood Place
Bean, Dartford
Kent DA2 8BD
England
phone: 01474 709 784
fax: 01474 709 896
info@anacondabelting.co.uk**

muller|beltex



KRYPTANE®

KRYPTANE® abrasion resistant polyurethane liners for concrete, aggregate and mineral industries.

Yellow 59 A shore for resistance to impact and shock. Excellent elasticity for right angle impact of lump sizes up to 50 mm.

Red 80 A shore for light to medium-duty sliding wear. Excellent for granular materials, both wet and dry, up to 50 mm.

Green 85 A shore for cut and abrasion resistance plus oil & fat resistance. Excellent for cement and concrete mixers, sand and light aggregates.

Black 93 A shore for the toughest abrasion resistance in heavy-duty applications. Excellent for shallow angle impact of large and sharp materials.

The KRYPTANE® abrasion resistance on bases of DIN 53516, ASTM D1630-94 and ASTM D3389-87 is unrivaled by other polyurethanes.

Technical details:

Technical details:	KRYPTANE®				
	shore A	Yellow 59	Red 80	Green 83	Black 93
Colour/hardness					
Tensile strength	N/mm ²	25	24.1	45.5	51.6
Elongation at break	%	800	650	600	550
Load 100% elongation	MPa	1.8	3.8	5.5	9.6
Load 300% elongation	MPa	3.2	8.3	7.8	15.5
Compression	%	53	23	32	30
Abrasion resistance DIN 53516	mm ³	48	20	43	42
FDA quality		yes	yes	yes	yes



Mixer liner



Weighing hopper



Vibrating chute



Hopper + Flaps



Lined chutes



Lined pipes

Standard sheet dimensions 3050 x 1220 mm x 6, 8, 12, 18 mm up to 50 mm. Fitting is simple by means of bolts, screws, glue or welding.

KRYPTANE® is available on following substrates :

SB on solid steel, MB on stretched metal, FB on textile, PL plain and WD with weldable disks.

Ask for our extensive brochure and quotes !

Advantages

- Proven abrasion and impact resistance for chutes, troughs, diverters, hoppers, wash boxes.
- Outlasts other urethanes, rubber, UHMW and hardened steel.
- Reduces noise.
- Reduces sticking problems.
- Flexible, light and easy to fit by bolts and/or glue.
- Less downtime, very economic in use.

Applications

- Lined pipes standard or special sizes on request
- Belt scrapers simple to fit, non-stick, standard thickness 19 or 25 mm.
- Drag Chain Flights most popular styles available, reduces noise, outlasts UHMW and nylon.
- Drag Chain Support Strips and Bottom plates non-stick, silent running, reduces wear on chain and bearings, outlasts steel and UHMW.
- Classifier Screw Flight Shoes reduces flight wear, longer screw life, better material flow, standard or special sizes.
- Separators and Scraper Blades for concrete floor making machinery, standard sizes or specials
- Concrete Mixer Outlet Seals and Spout liners outlasts rubber, will not absorb moisture, oil resistant.



Kryptile® Ceramic with bolt fitting

You've tried the rest
now buy the best

Subject to alterations without prior advice.

muller|beltex

KRYPTANE® super abrasion resistant polyurethane liners for minerals, concrete, glass and aggregates handling:

- superior, unequalled life
- suitable for impact and sliding applications
- low stick characteristics, sound reducing
- cost saving fitting methods



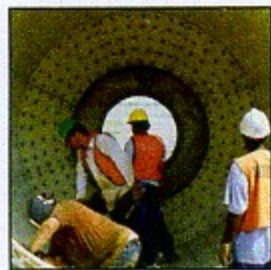
intake hopper



silo and weigh hopper



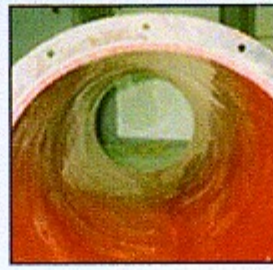
vibrating chute for glass



mixer



chute



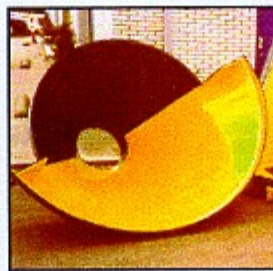
pipe



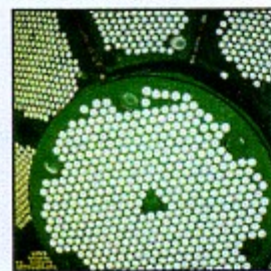
fitting



screw



hopper



Kryptile® Ceramics



pipe



chain conveyor

Product Range:

KRYPTANE® qualities:

YELLOW 59° A shore
Remarkably elastic and impact resistance, outlives the best 40° shore rubbers.

RED 80° A shore
Specially developed for fine-grained products like sand.

GREEN 83° A shore
Outlives the best 60° A shore rubbers, generally usable.

BLACK 93° A shore
Usable in applications with large sharp products.

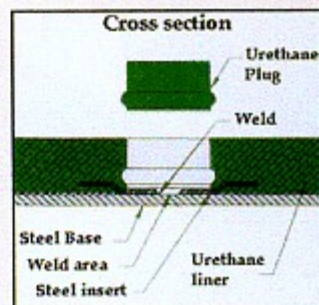
KRYPTILE®
Ceramic in polyurethane, solves extreme abrasion wear problems.

Standard sheet dimensions:

3050 mm x 1220 mm x 6-8-12-18-25-30 mm
other thicknesses and sizes on request.

Types available:

- PL : Plain
- MB : with stretched metal backing 1.5 mm for fitting with 8040 bolts, also stainless
- FB : with textile backing for fitting with glue
- SB : with solid steel base 1.8 mm, also stainless
- RB : with 3.4 mm encasped stretched metal, also stainless.
- DISK : with metal insert.
Optional; thicker steel inserts.



weld-disc with metal insert



bolt type 8040
fitted in countersunk holes

**You've tried the rest
now buy the best**

muller|beltex

Solid partners for powder and bulk handling components